

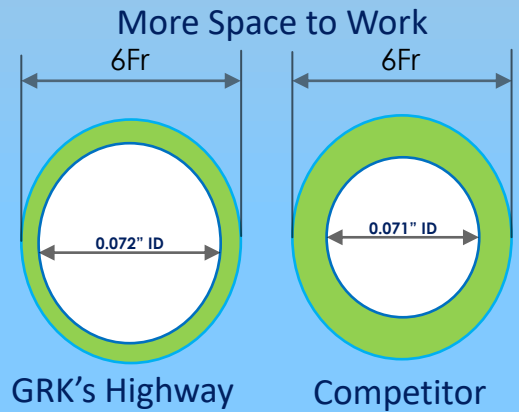


# Highway Guiding Catheter

" Engineered for Controlled Guiding "

India's First Indigenously built Guiding catheter

- ❑ Available in 5Fr, 6Fr Large, 6Fr Medium, 7Fr and 8Fr
- ❑ Working Lengths up to 125CM
- ❑ 0.072" ID for 6Fr Large – One of the largest lumen available in the market



Larger Lumen (0.072" ID) Diameter improves device compatibility

- ❑ *Large inner lumen facilitates easy insertion of interventional devices*
- ❑ *Ultra soft tip for safe atraumatic engagement into the ostium*
- ❑ *Stainless steel Braiding provides more precise torque control and accurate positioning.*

[www.grkmedical.com](http://www.grkmedical.com)

[Info@grkmedical.com](mailto:Info@grkmedical.com)



# Highway Guiding Catheter

" Engineered for Controlled Guiding "

- ❑ Extensive collection of traditional and specialty coronary curves available
- ❑ *Material and Construction of distal shaft enhances the backup support for uninterrupted PCI.*



Excellent Kink Resistance

New braid technology improves kink resistance and may help to reduce procedure time and maximize patient comfort



Available in wide Range Shapes for easy selection

[www.grkmedical.com](http://www.grkmedical.com)

[Info@grkmedical.com](mailto:Info@grkmedical.com)



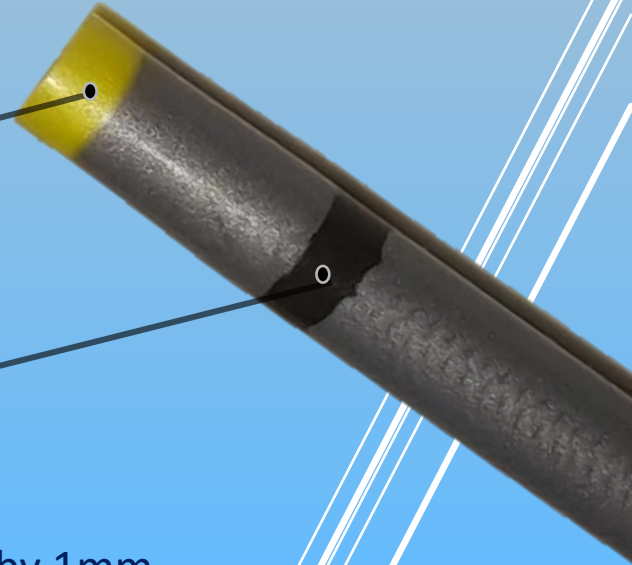
# Highway Guiding Catheter

" Engineered for Controlled Guiding "

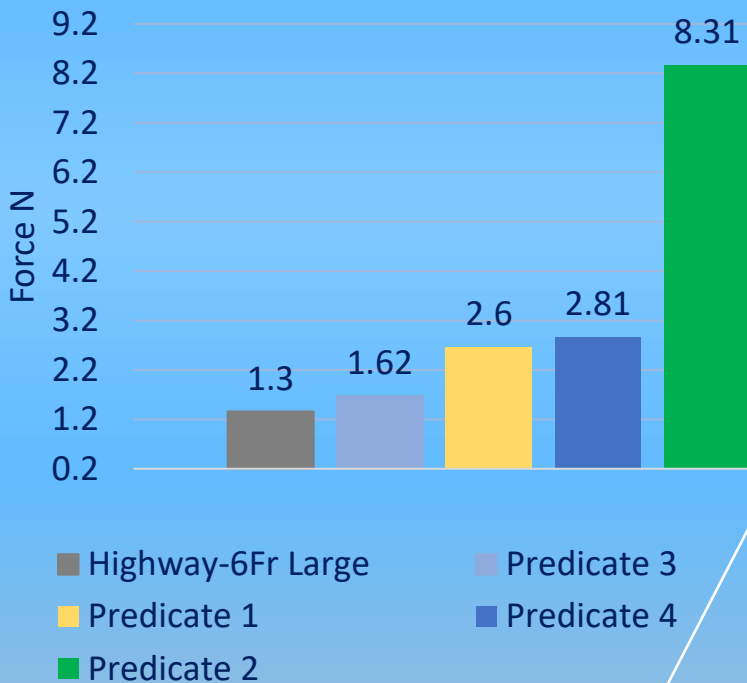
## Atraumatic Tip

Engineered to avoid vessel damage with soft tip

Polymer Marker band for Better visibility under fluoroscopy



Tip Softness: Force to deflect the tip by 1mm



The Highway has one of the softest tips for safer tracking and seating, So the physicians can navigate challenging anatomy with confidence.

[www.grkmedical.com](http://www.grkmedical.com)

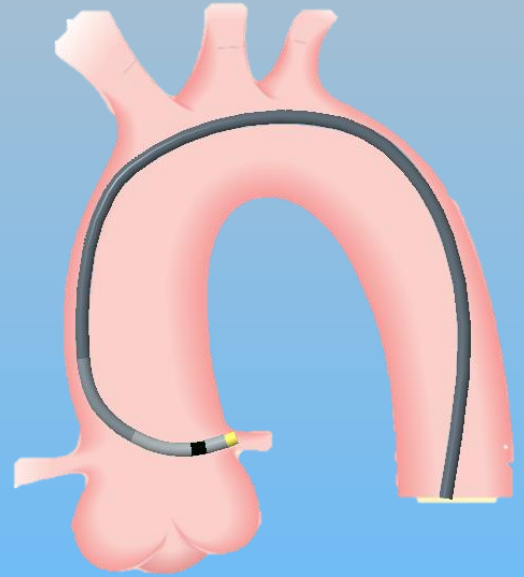
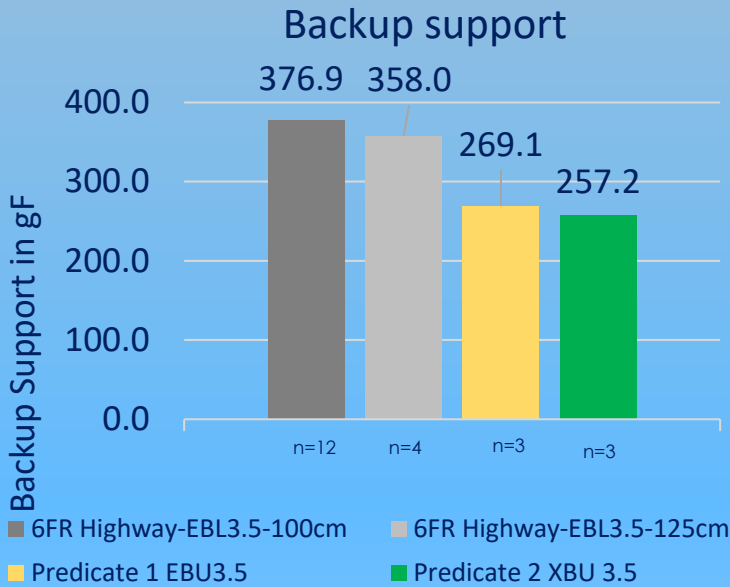
[Info@grkmedical.com](mailto:Info@grkmedical.com)



# Highway Guiding Catheter

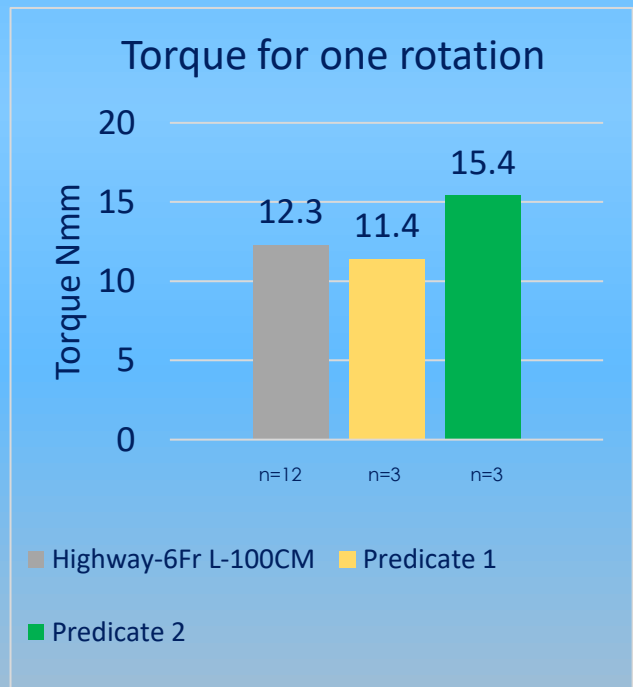
" Engineered for Controlled Guiding "

Good Backup Support with proprietary braiding technology and multiple distal segments



Shape retention comparable with mostly used catheter in the market.

- Precise torque response enhances maneuverability and engagement
- Multi segment design and braid technology provides good trackability



Predicate 1 is one of the leading catheter in the market

[www.grkmedical.com](http://www.grkmedical.com)

[Info@grkmedical.com](mailto:Info@grkmedical.com)



# Highway Guiding Catheter

" Engineered for Controlled Guiding "

Available in different Fr sizes, below table list out the sizes

Fr Size	ID (inches)	ID (mm)	OD (inches)	OD (mm)	Working lengths
5 Fr	0.058"	1.47	0.069"	1.75	60CM, 65CM, 80CM, 90CM, 100CM, 110CM, 125CM
6 Fr Medium	0.071"	1.80	0.082"	2.08	
6 Fr Large	0.072"	1.83	0.082"	2.08	
7 Fr	0.081"	2.06	0.094"	2.39	
8 Fr	0.091"	2.31	0.105"	2.67	

Extensive collection of traditional and specialty coronary curves available

Highway Guiding Catheter	Amplatz Left	AL 0.75	AL 1.0	AL 1.5	AL 2.0	AL 2.5	AL 3.0	AL 4.0	AL 5.0	
	Amplatz Right	AR 1.0	AR 2.0							
	Extra Backup	EBL 2.5	EBL 3.0	EBL 3.5	EBL 4.0	EBL 4.5	EBL 5.0	EBL 3.75		
	Judkins Left	JL 30	JL 3.5	JL 4.0	JL 4.5	JL 5.0	JL 6.0			
	Judkins Right	JR 3.0	JR 3.5	JR 4.0	JR 4.5	JR 5.0	JR 6.0			
	JCL	JCL 3.0	JCL 3.5	JCL 4.0	JCL 4.5	JCL 5.0	JCL 6.0			
	JCR	JCR 3.0	JCR 3.5	JCR 4.0	JCR 4.5	JCR 5.0				
	EBR	EBR 3.5	EBR 4.0	EBR 4.5						
	MPA	MPA 1	MPA 2							
	MPB	MPB 1								
	Universal	USL 30	USL 35	USL 40	USL 45	USL 50				
	Radial Brachial	RB								
	Hockey Stick	HS								
	Ikari Left	IL 3.5	IL 3.75	IL 4.0	IL 4.5					
	Ikari Right	IR 10	IR 15	IR 20						
	Barbeau	BRBU								
	Straight	STR								

Ordering information: Product code for ordering shall be framed as below

6Fr large: 6HWL-XXXX-YYY for eg: for placing 0.072ID, JR4.0, 100cm , product code will be 6HWL-JR40-100

6Fr Medium: 6HWM-XXXX-YYY for eg: for placing 0.071ID, JR4.0, 100cm, product code will be 6HWM-JR40-100

5Fr, 7Fr and 8Fr: FrHW-XXXX-YYY for eg: for placing order for 5Fr, EBL3.5,100cm product code will be 5HW-EBL35-100

**Intended Use:** Guiding Catheter is intended to be used in the coronary or peripheral vascular system. The Guiding catheter is designed to provide a pathway through which therapeutic devices are introduced.

**Important Information:** Refer to Instructions for Use supplied with the device for indications, warnings, precautions, and adverse effects.

[www.grkmedical.com](http://www.grkmedical.com)

[Info@grkmedical.com](mailto:Info@grkmedical.com)